



Statoil

OCSAB Summer Seminar

Navigating Through the BOEM and BSEE Organizations

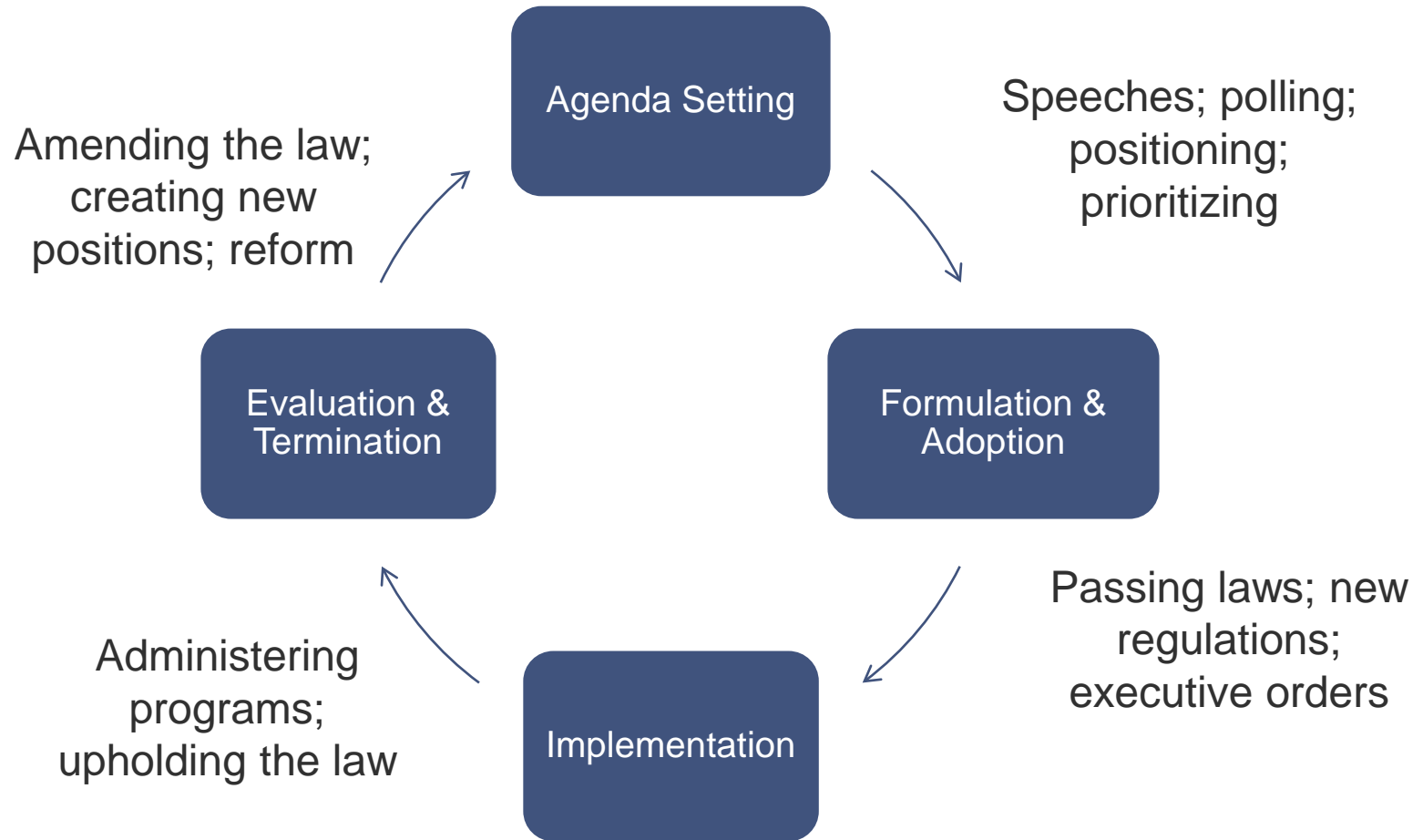
June 8, 2017

Policymaking in the U.S. Government





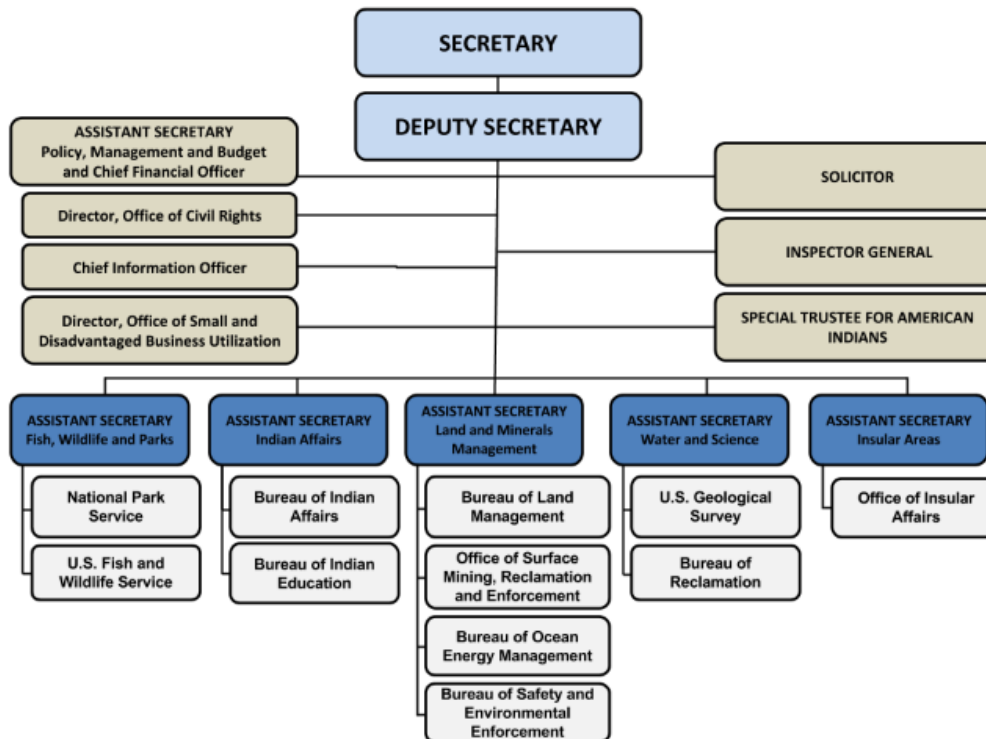
General Model of the Policymaking Process



Policymaking Process at DOI



DOI Organizational Chart



How to Engage on Policy?

- Identify and tracking issues
 - Follow press, publications, news cycle, think tanks, hearings, meetings
- Developing positions
 - Research, analysis, discussion, collaboration
- Providing information and context
 - Think tanks, reporting, issue updates
- Engaging policymakers
 - Hill visits, agency meetings, workshops
- Building coalitions of support
 - Trade associations, industry partnerships



How to Engage on Operations?

- Understand the roles and responsibilities of the bureaus.
- Be familiar with the organization of each bureau.

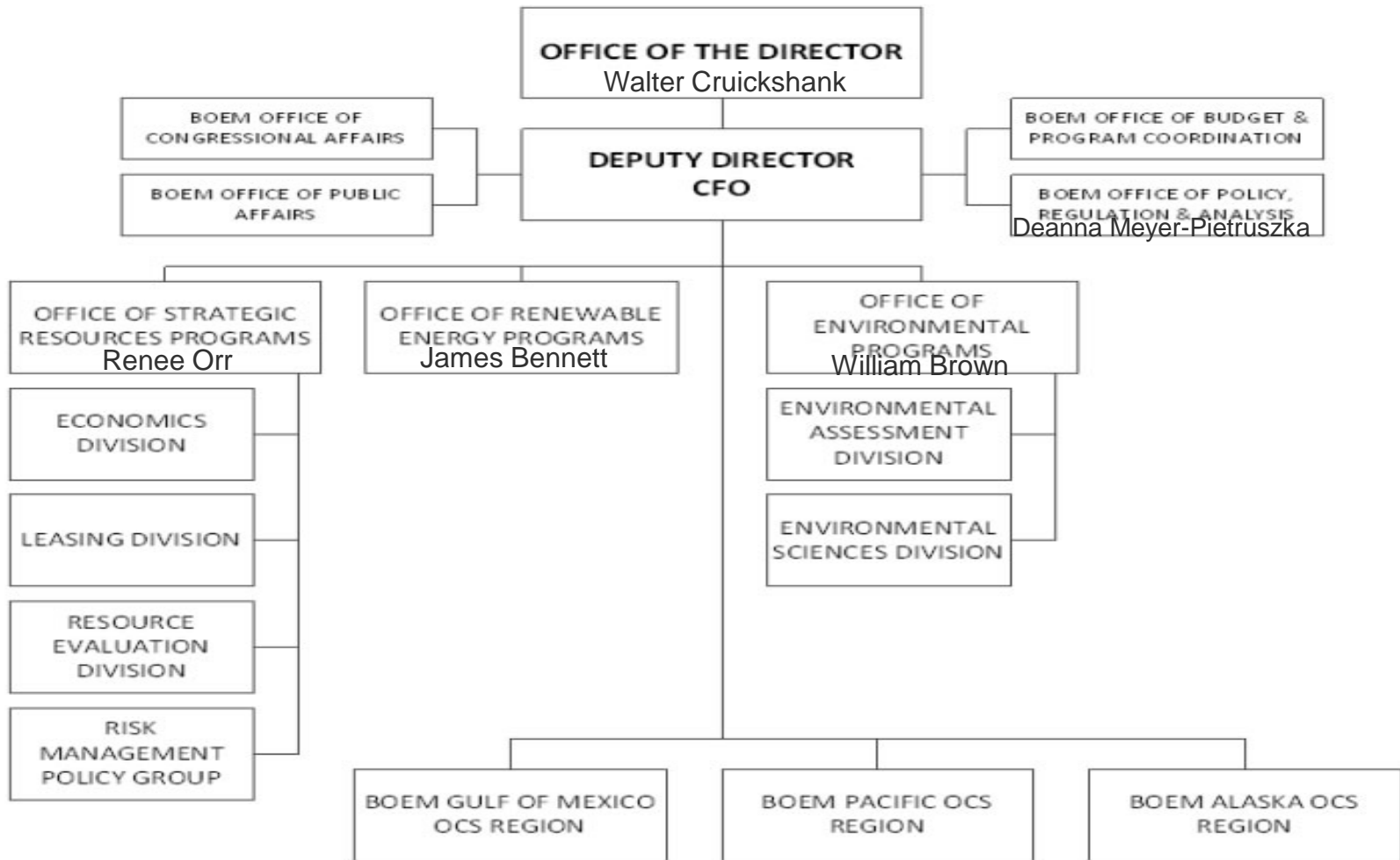
Roles of BOEM – Bureau of Ocean Energy Management

- **Mission Statement:**
- *BOEM manages the development of the nation's offshore resources in an environmentally and economically responsible way.*
- **BOEM is responsible for the following:**
- Five-year leasing programs
- Public lease sales
- Management of leases from initial conveyance until final relinquishment
- Environmental analysis per the National Environmental Policy Act (NEPA)
- Plan Administration
- Resource Evaluation
- Economic Analysis
- Renewable Energy Program

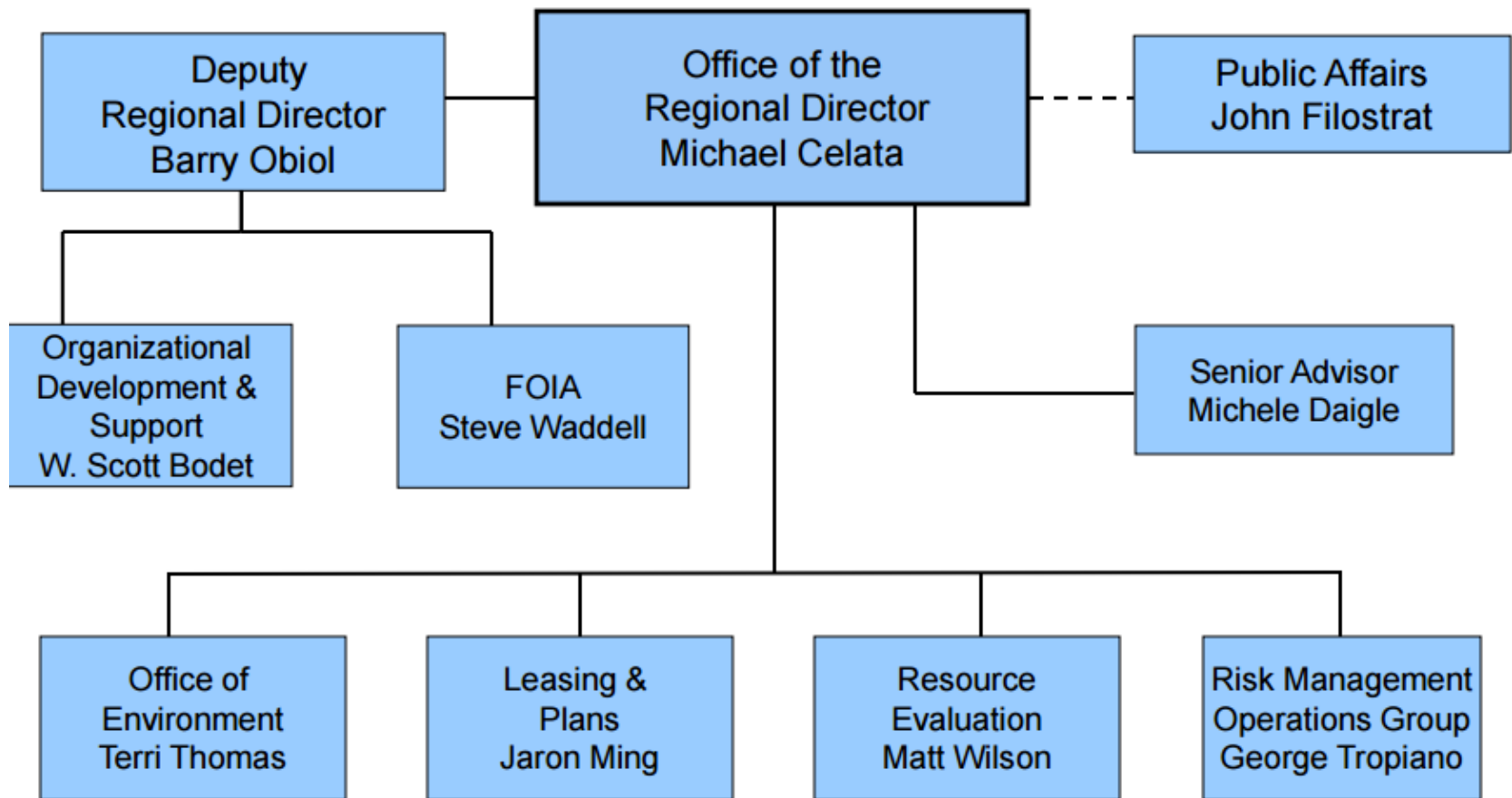
Roles of BSEE – Bureau of Safety and Environmental Enforcement

- **Mission Statement:**
- *BSEE works to promote safety, protect the environment, and conserve resources through vigorous regulatory oversight and enforcement.*
- **BSEE is responsible for the following:**
- Permitting of drilling, construction and decommissioning activities
- Inspection of equipment and facilities
- Offshore regulatory programs
- Oil spill response plans
- Training and environmental compliance

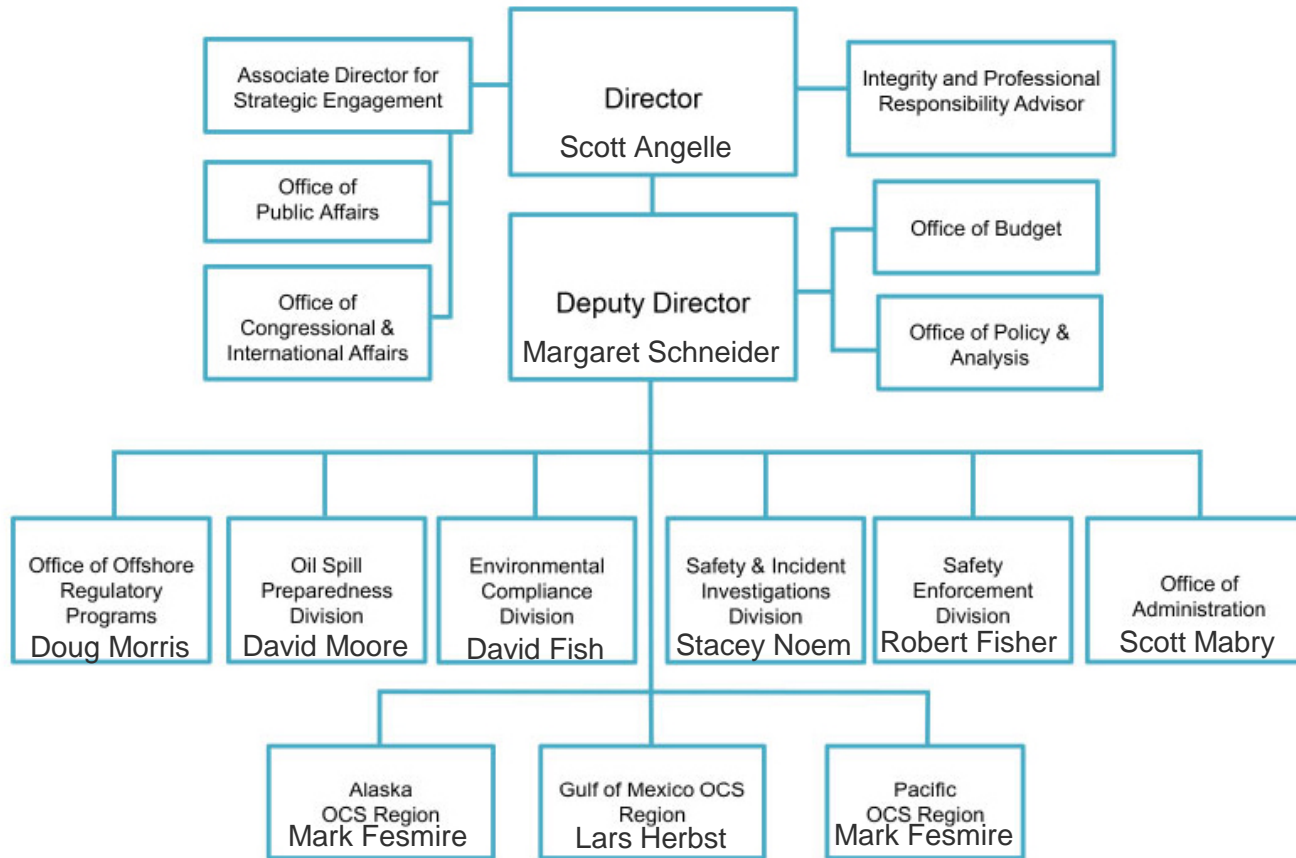
BOEM Organization Chart



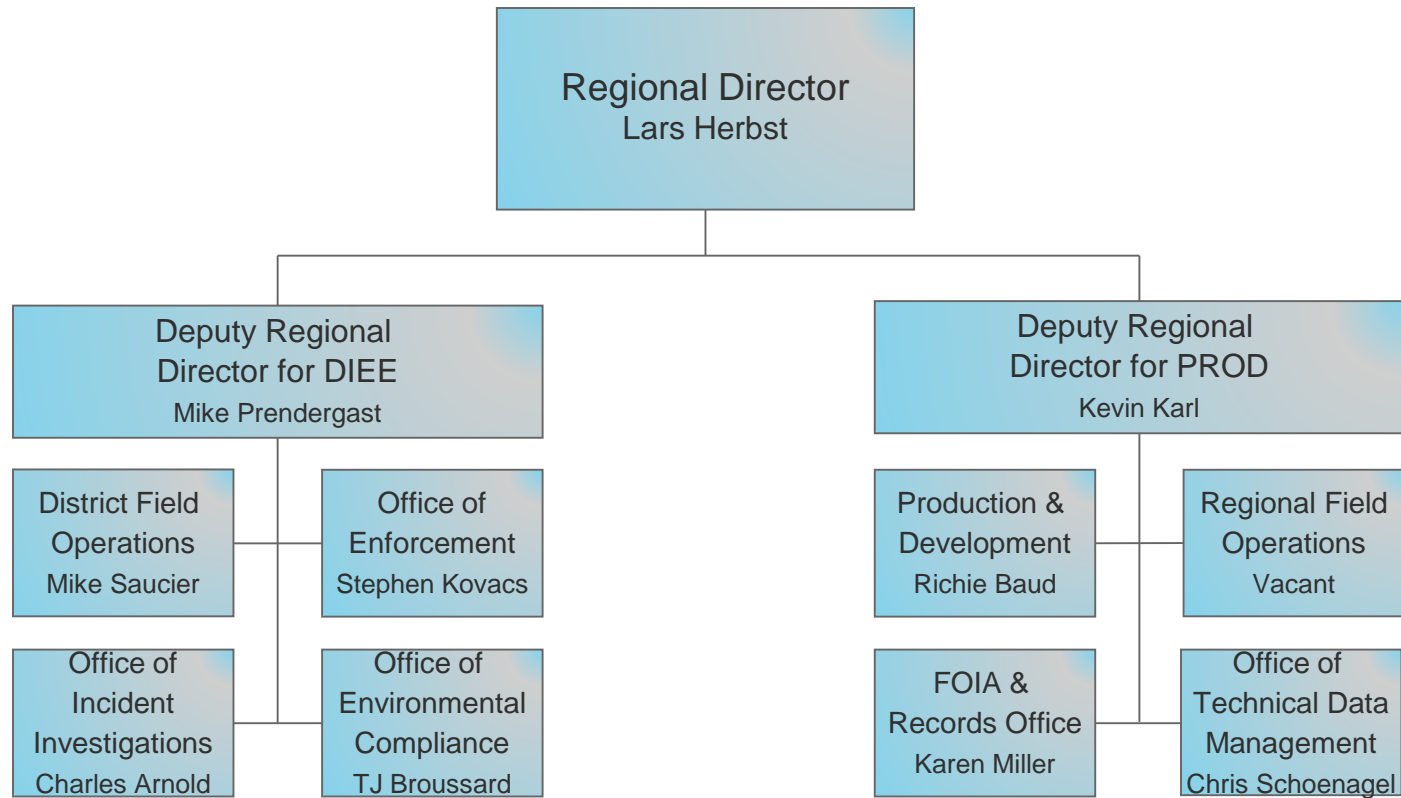
BOEM Gulf Region



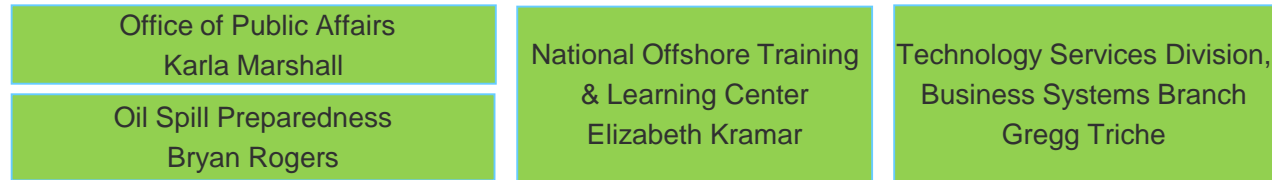
BSEE Organization Chart



BSEE - Gulf of Mexico OCS Region



Headquarters-based



Statoil. The Power of Possible

OCSAB Summer Seminar

Navigating Through the BOEM and
BSEE Organizations

Foster L. Wade, Ph.D.

Manager, Public & Regulatory Affairs
Statoil

FWAD@statoil.com

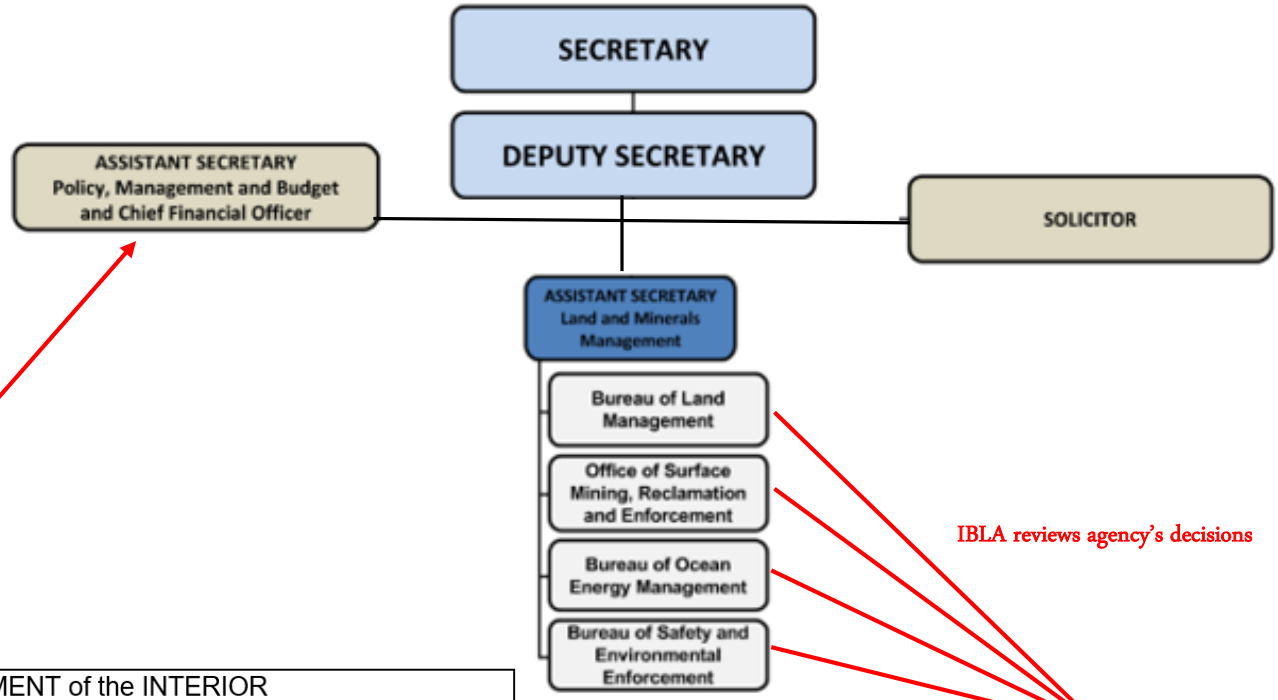
© Statoil ASA

This presentation, including the contents and arrangement of the contents of each individual page or the collection of the pages, are owned by Statoil. Copyright to all material including, but not limited to, written material, photographs, drawings, images, tables and data remains the property of Statoil. All rights reserved. Any other kind of use, reproduction, translation, adaption, arrangement, any other alteration, distribution or storage of this presentation, in whole or in part, without the prior written permission of Statoil is prohibited. The information contained in this presentation may not be accurate, up to date or applicable to the circumstances of any particular case, despite our efforts. Statoil cannot accept any liability for any inaccuracies or omissions.



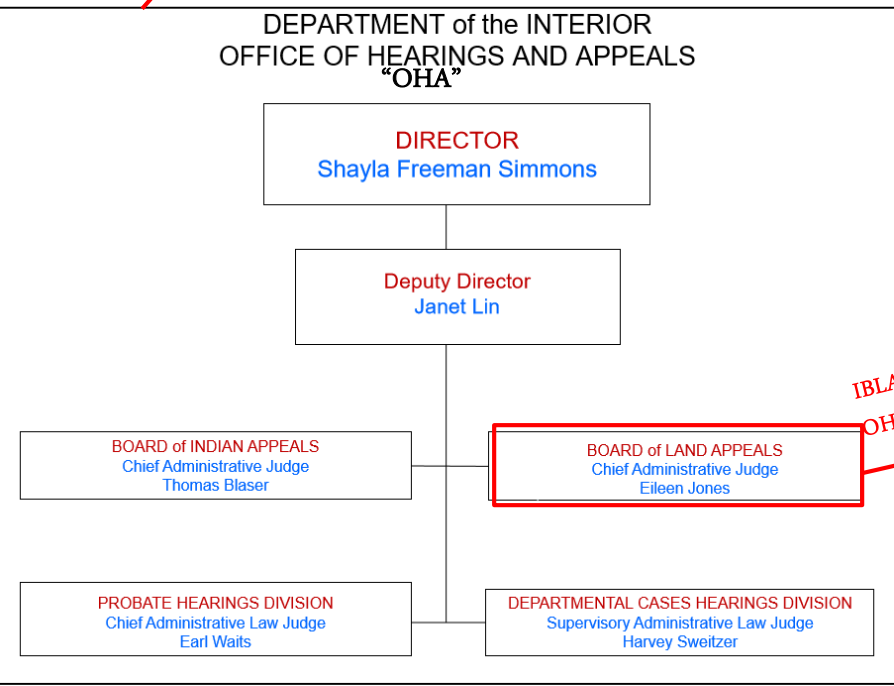


DOI Org Chart

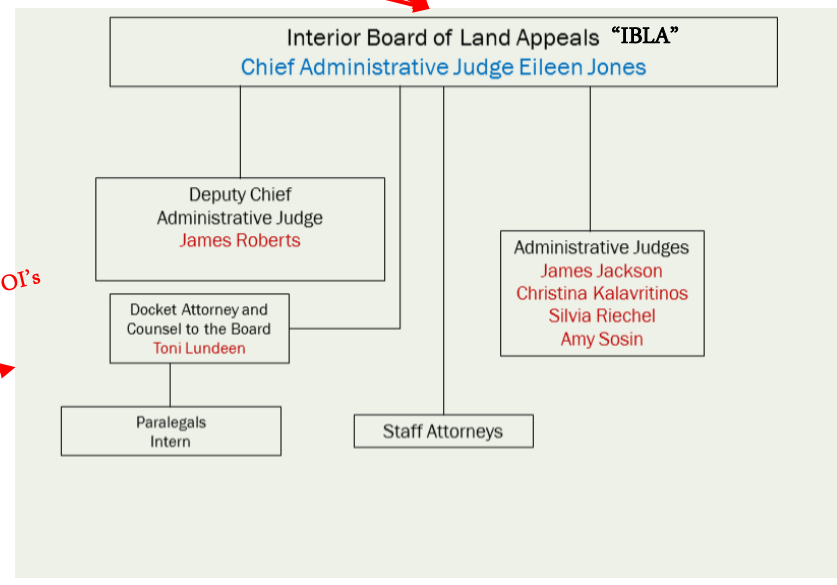


Reporting line

IBLA reviews agency's decisions



IBLA located within DOI's OHA



Recourse

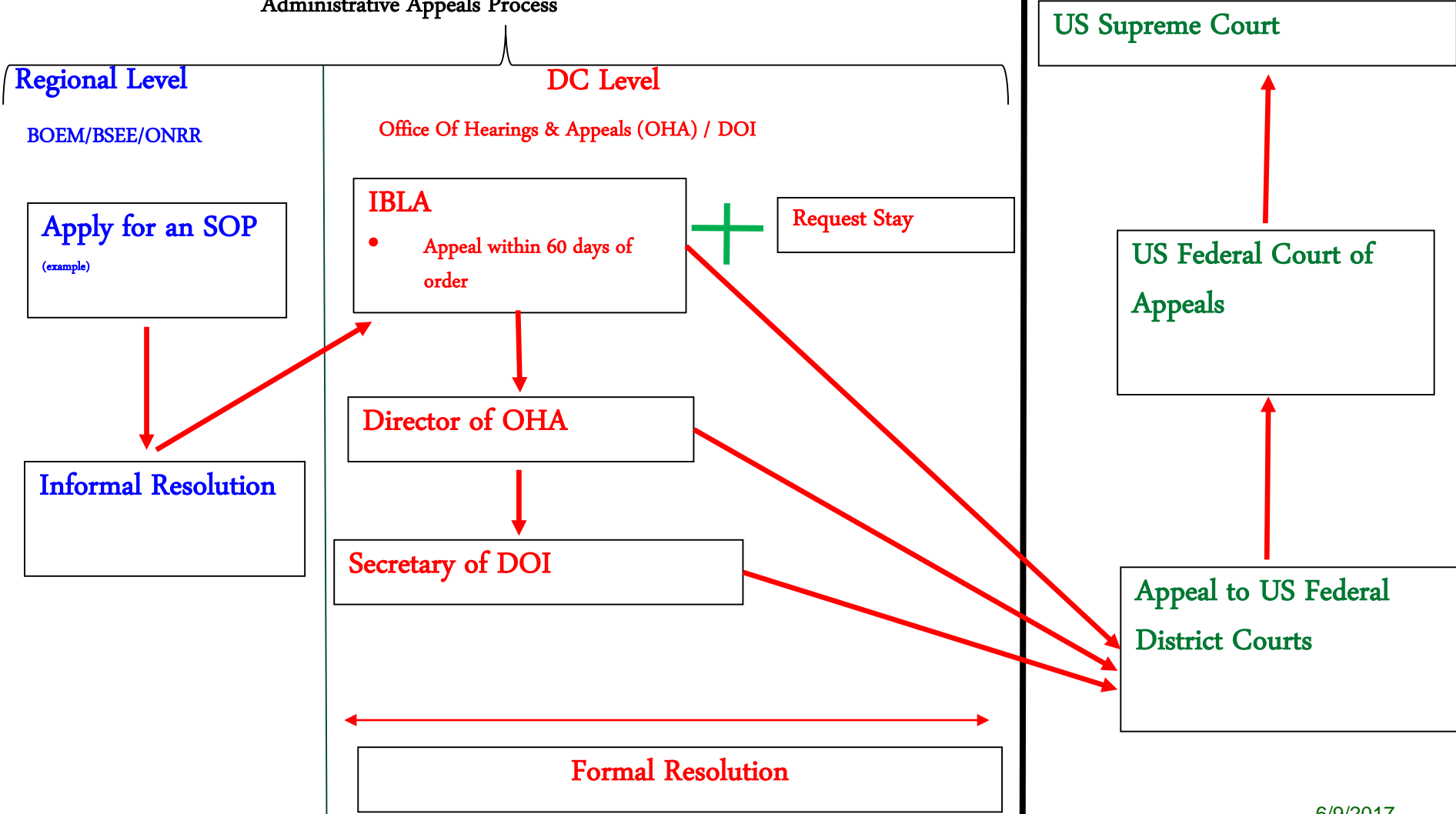


TRACK 1

Department of the Interior's
Administrative Appeals Process

TRACK 2

Judiciary Process



Questions ?????

